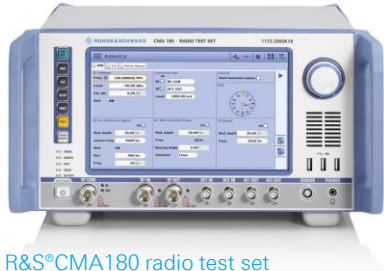


Testing of avionics devices – airborne and ground stations

R&S®CMA180 and R&S®EVSG1000

Airborne stations



R&S®CMA180 radio test set

Test challenge

Testing aircraft navigation, communications and landing systems

Test solution

The R&S®CMA180 can generate ILS, VOR and marker beacon signals to stimulate onboard navigation and landing systems, and generate modulated AM signals, including SELCAL ID, to test onboard communications systems.

Your benefit	Features
One-box setup	All navigation and communication testing signals can be generated and controlled over the R&S®CMA180
Easy operation	Intuitive interface for setting up the ILS, VOR and marker beacons

Ground stations



R&S®EVSG1000 VHF/UHF Airnav/Com analyzer

Test challenge

Servicing air navigation and communications systems

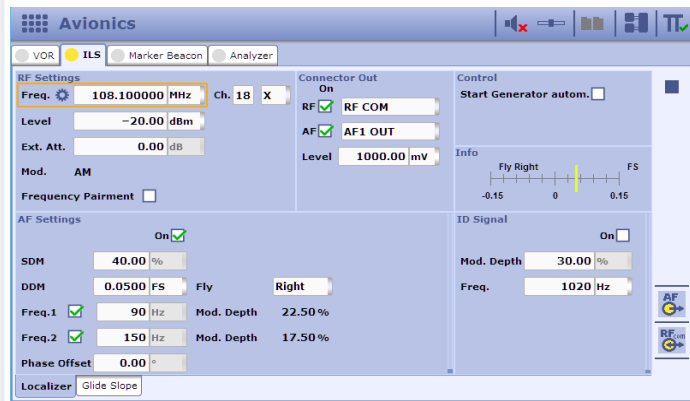
Test solution

The R&S®EVSG1000 is a portable signal level and modulation analyzer specifically designed for commissioning and servicing ILS, VOR and marker beacon ground stations and for analyzing ATC COM signals.

Your benefit	Features
Field measurements	High-precision field analysis of ILS, VOR and marker beacon ground systems (in line with ICAO Doc 8071 and ICAO Annex 10)
Runway measurements by vehicle	Dynamic measurements at up to 100 data records/s in high measurement rate mode plus simultaneous analysis of course and clearance signals on dual-frequency (2F) ILS systems

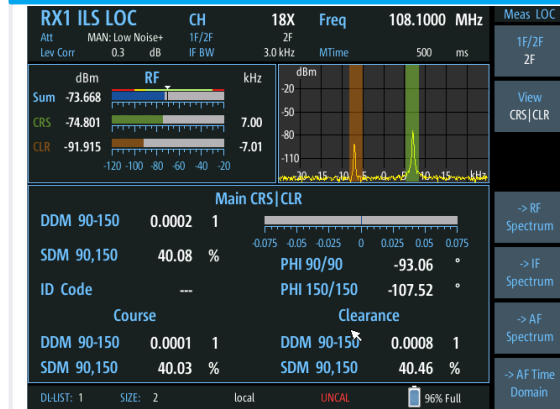
For more information, see www.rohde-schwarz.com/catalog/CMA180 and www.rohde-schwarz.com/catalog/EVSG

Avionics, onboard radio testing – ILS localizer



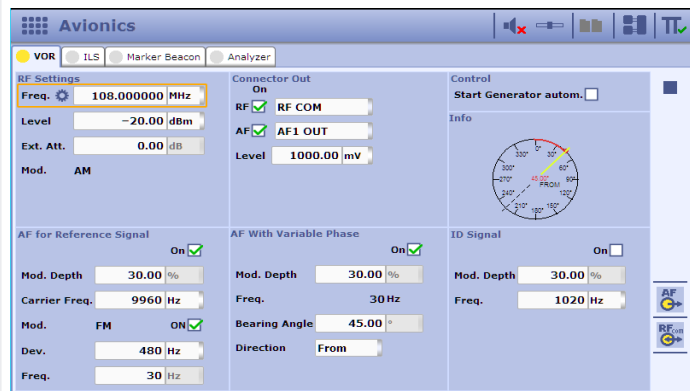
R&S®CMA180: ILS localizer settings on CMA (RF signal)

ILS measurements on ground stations



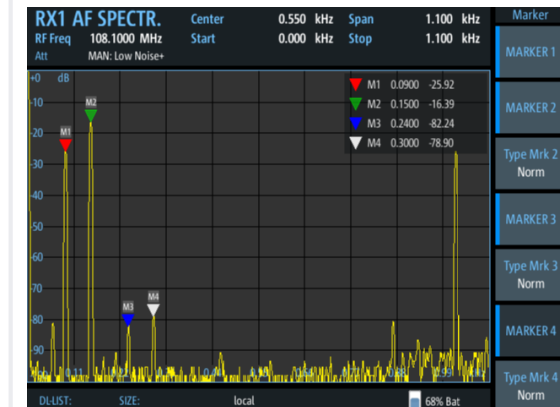
R&S®EVSG1000: analysis of dual-frequency (2F) ILS system

Avionics, onboard radio testing – VOR signal



R&S®CMA180: VOR settings (AF signal)

Analysis of harmonics and intermodulation products



R&S®EVSG1000: measurement of AF spectrum

Ordering information

Typical configuration

Description	Type
Radio test set	R&S®CMA180
ILS/VOR generator	R&S®CMA-K130

Ordering information

Typical configuration

Description	Type
VHF/UHF Airnav/Com analyzer	R&S®EVSG1000
ILS CRS/CLR analysis	R&S®EVSG-K1
VOR analysis	R&S®EVSG-K2
RF spectrum analysis	R&S®EVSG-K10
AF spectrum analysis	R&S®EVSG-K11

Rohde & Schwarz GmbH & Co. KG | Europe, Africa, Middle East +49 89 4129 12345 | North America 1 888 TEST RSA (1 888 837 87 72)

Latin America +1 410 910 79 88 | Asia Pacific +65 65 13 04 88 | China +86 800 810 82 28 / +86 400 650 58 96

www.rohde-schwarz.com | customersupport@rohde-schwarz.com

R&S® is a registered trademark of Rohde & Schwarz GmbH & Co. KG | PD 3607.9937.32 | Version 01.00 | February 2019 (fs)

Trade names are trademarks of the owners | Testing of avionics devices – airborne and ground stations | Data without tolerance limits is not binding

Subject to change | © 2019 Rohde & Schwarz GmbH & Co. KG | 81671 Munich, Germany